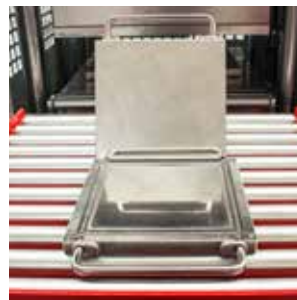
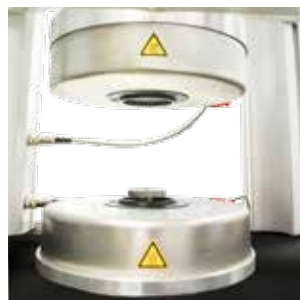
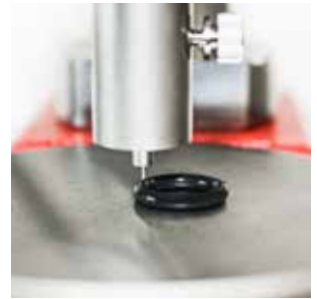
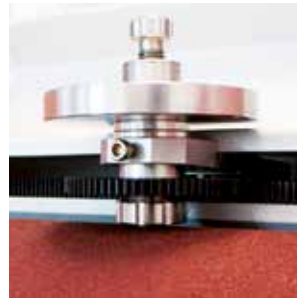
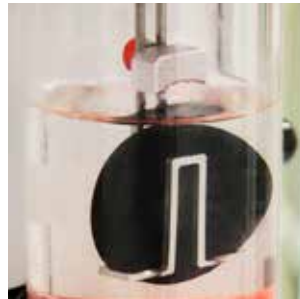


## *Bale cutting*



***INNOVATIONS IN  
RUBBER TESTING***



# MonTech CP 3000

## The innovative tabletop laboratory bale cutter



### The laboratory bale cutter CP 3000

is the ideal tool for sample preparation in the laboratory environment, particularly for cutting polymer bales, blocks and rubber sheets.

Operation made easy, safe and reliable:

The bale is placed on the conveyor at the rear of the machine, and the desired portion / cut size is pushed into the bale cutter onto the lower striker plate. The cutting blade is guided by hardened, precision-ground ball bearing guides. This ensures a smooth movement of the blade and precise cuts.

The CP 3000 is quiet, pneumatically operated, requires minimal maintenance, and does not require any electrical connection.

All MonTech bale cutters feature the unprecedented monoblock cutting knife which is machined from a solid block of high-strength, corrosion proof tool steel and entirely hardened.

This means to you: Frequent re-grinding or re-sharpening of the cutting knife - that's a thing of the past!

The CP 3000 is available in two different sizes: Standard and Compact.

In addition smaller and larger bale cutters as well as various semi or fully automatic material feeding options are available upon request.



### CP 3000 Compact

The CP 3000 compact is the most compact and versatile bale cutter available. The machine is designed for small scale laboratory applications and is ideally suited to prepare pre-cut blocks and slices of polymers for further sample preparation, such as cutting Mooney test samples with an M-VS 3000 volumetric sample cutter

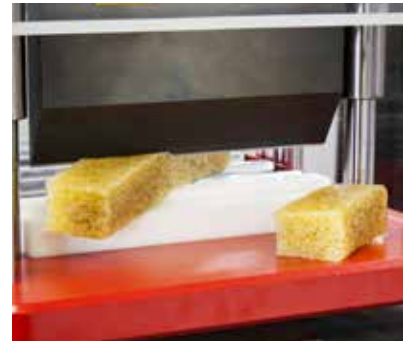
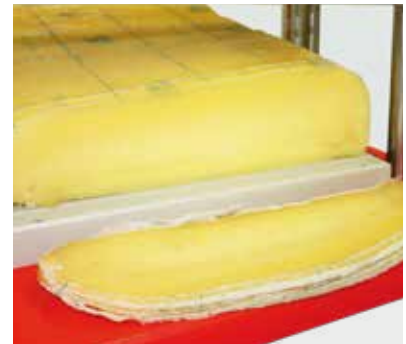
The CP 3000 compact is the ideal tool for small scale and trial mixing applications where the bale cutter is typically located in close proximity to the mixer feeding - to always have to right amount of polymer available when needed.

Safety two-hand control with anti-tiedown, transparent windows at all sides and a fully enclosed top-section of the CP 3000 make it also the safest laboratory bale cutter in the market.

Like all other MonTech cutters the CP 3000 series operates free from hydraulics, meaning that operation is extremely ergonomic and bale contamination is simply impossible.

Contact us today for  
a demonstration of the  
CP 3000 bale cutter!

| Technical specification      | CP 3000 Standard   | CP 3000 Compact                                     |
|------------------------------|--|---|
| International Standards      | BE EN 242 Part 2, ASTM D 7050  |   |
| Operation                    | Up to 12 cuts / minute   |   |
| Bale width / cutting width   | max. 520 mm  | max. 285 mm   |
| Bale height / cutting height | max. 240 mm  | max. 148 mm   |
| Cutting force (adjustable)   | Min: 0.6 tons @ 2.0 bar<br>Max: 4.6 tons @ 10.0 bar  | Min: 0.3 tons @ 2.0 bar<br>Max: 2.5 tons @ 10.0 bar |
| Cutting knife                | hardened and precision ground  |   |
| Cutting block                | Teflon, exchangeable   |   |
| Material supply              | roller conveyor,<br>total length 750 mm  | roller conveyor,<br>total length 400 mm             |
| Safety equipment             | pneumatic safety 2-hand operation (anti-tiedown),<br>transparent safety shields at both sides as well as<br>front and backside of the machine  |   |
| Required supplies            | Compressed air with min. 2 bars (5 bars recommended),<br>No electrical connection required!  |   |
| Dimensions (H x W x D)       | 1085 x 900 x 700 mm  | 940 x 480 x 560 mm                                  |
| Weight                       | approx. 225 kg net   | approx. 120 kg net                                  |
| Optional items               | <ul style="list-style-type: none"> <li>- High speed version with increased cutting speed</li> <li>- Various cutting block designs</li> <li>- Increased cutting width and/or height</li> <li>- Safety lid for knife edge</li> <li>- Stainless steel / hygienic / medical / food version</li> <li>- Frontside conveyor</li> <li>- Frontside safety shield with / without conveyor</li> <li>- Backside feeding tunnel</li> <li>- Backside safety shield</li> <li>- Pneumatic downholder</li> <li>- Heated cutting knife (ambient to + 80°C)</li> <li>- Cutting line laser</li> <li>- Setup table or cart</li> <li>- Rubber bale lifting and handling systems</li> </ul> |   |



# MonTech CP 3000 Auto Automated bale cutting system

## Highly efficient automatic cutting system for polymer and rubber bales

The CP 3000 Auto is the most efficient way to get your sample preparation and cutting done!

Whether for synthetic or natural rubber bales this cutting system is the most efficient solution for sample feeding and preparation.

The system features a long infeed conveyor line on which bales can be buffered and fed into the machine. A PLC controlled sequence allows definition of the exact required cutting length and number of cuts.

The automatic feeding paired with a specific downholder systems ensures accurate cuts at high speed. Quick and automatic cycles ensure an optimum cutting efficiency allowing to cut a full rubber bale in less than 3 minutes. All cut material is buffered in a discharge conveyor which can be linked to storage bins or further conveying systems. For operator safety the unit is equipped with tunnels in the loading and discharge area, with a supervised maintenance door and safety light guards. Optionally ergonomic vacuum bale handling systems are available and for an increased productivity the CP 3000 Auto system can be directly linked to mixing line feeding and control, equipped with automatic bale and cut measurement sensors as well as robotic depalletizers.





### Technical specification

### CP 3000 Auto

*please refer to CP 3000 for technical details on the bale cutter itself*

#### Bale dimensions (LxWxH)

max. 800 x 520 x 240 mm

#### Conveyor lines

Loading: total length 1750 mm (940mm open)  
Discharge: total length 1550 mm (1000mm open)

#### Safety equipment

front- and backside feeding tunnel with light guards,  
supervised safety maintenance door

#### Pneumatics

Compressed air with min. 5 bars (65 psi)

#### Dimensions (H x W x D)

1920 x 3280 x 700 mm (incl. support table and conveyors)

#### Weight

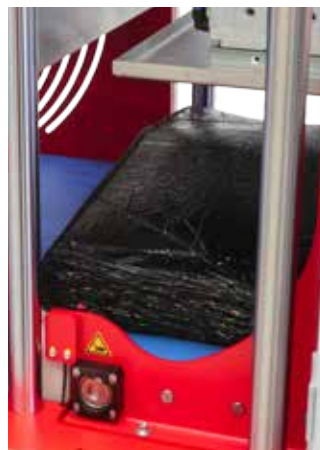
approx. 560 kg net

#### Electrical

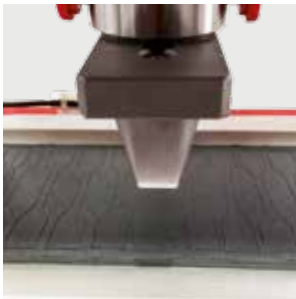
90-250 V, 3 Amps, 47-63 Hz, Single phase

#### Optional items

- Heated cutting knife (ambient to + 80°C)
- Rubber bale lifting and handling systems



## Rubber Testing Solutions



**MonTech**  
Werkstoffprüfmaschinen GmbH  
Carl - Benz - Straße 11  
D - 74722 Buchen / Germany

Phone: +49 (0)6281 562230  
Fax: +49 (0)6281 562255  
info@rubber-testing.com  
www.rubber-testing.com

